



PTZ Handover  
Aaron Saks  
Product & Technical Manager

# Agenda

---

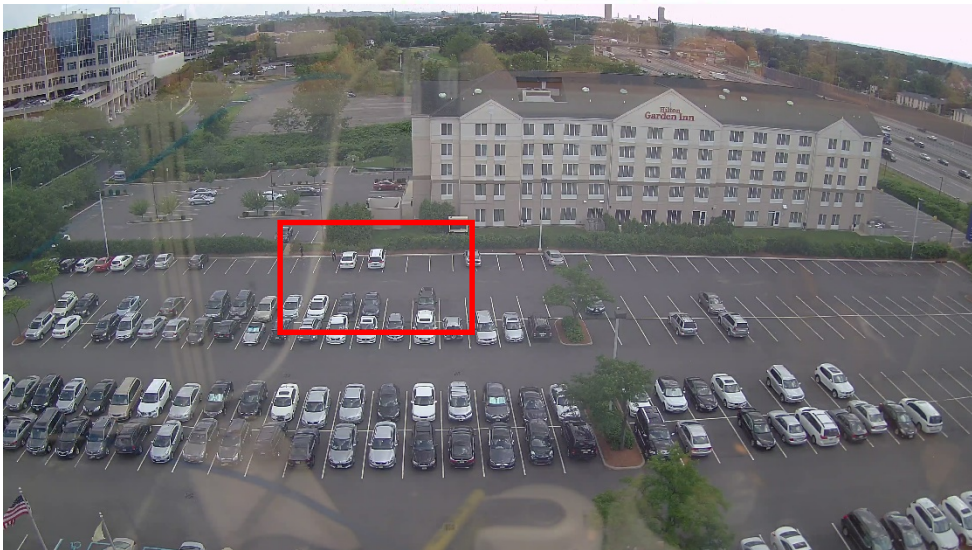
- Introduction
- Demo Videos
- Compatible models
- Live Setup Demo
- Q&A

## Notes:

- This webinar is being recorded and will be available for replaying. The presentation materials will also be available in PDF format.
- Please visit <https://www.hanwhasecurity.com/trainings/webinars/> to view webinars & sign up for future webinars.
- We will take Q&A time permitting. In case there is not time to get to all of the questions, we will reply to you individually afterwards. Please use the Chat or Q&A section.
- All participants have been put in to listen only mode.

Hanwha's unique PTZ hand-over feature allows an IP PTZ camera to zoom into a pre-set locations once an alarm trigger is received from another camera on the same surveillance system. This feature improves the efficiency of the system by decreasing the reliance on a security guard, or system operator to track events, and by increasing the likelihood that critical events in a surveillance area will be captured and recorded.

1. Fixed camera alarm event



2. Alarm notification sent to PTZ camera



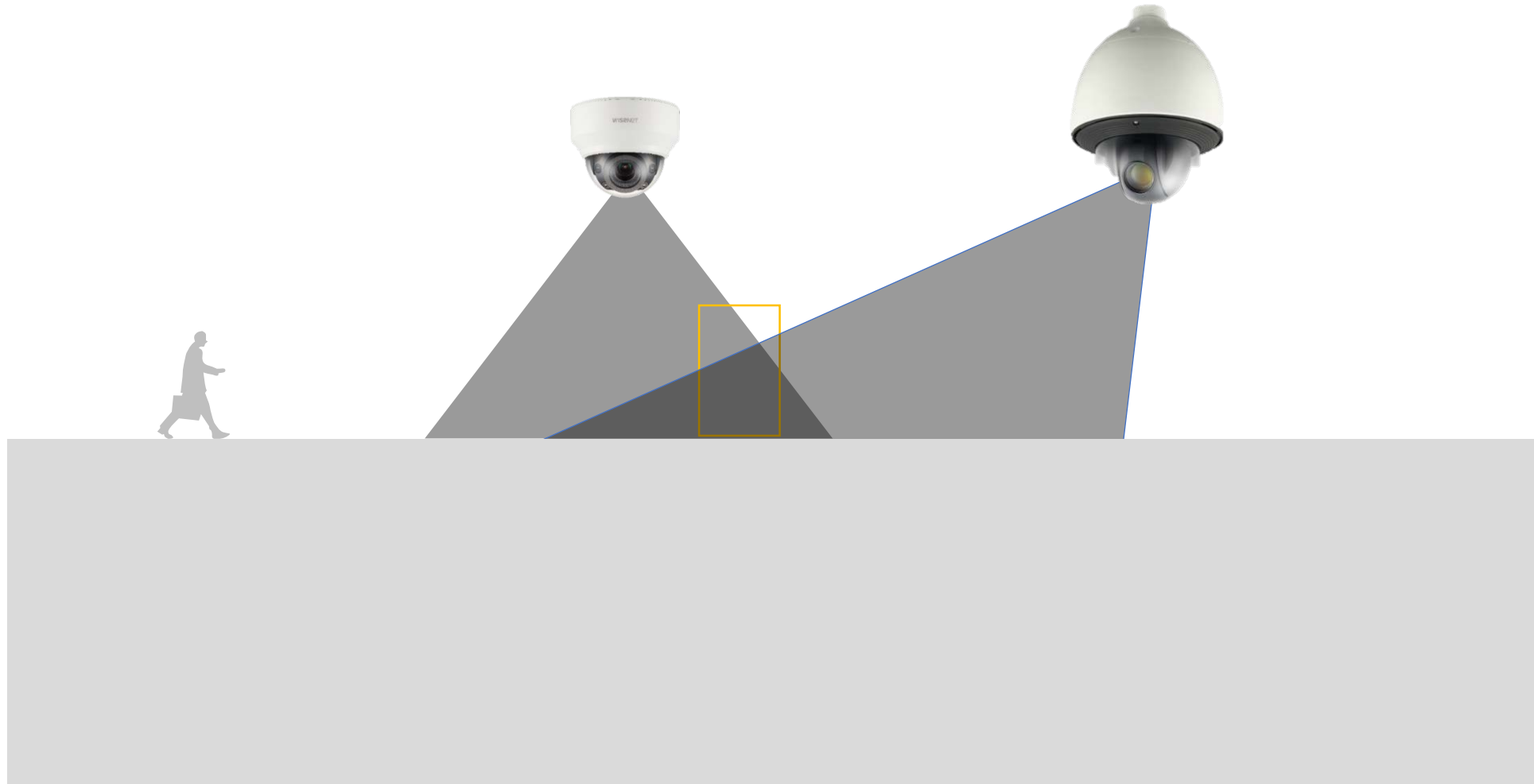
3. PTZ camera immediately zooms into pre-set location



\*Trigger Auto-Tracking, if available

# Motion Detection Hand over

- [MD] Able to link events with other camera's preset position
  - Multiple cameras are interlocked to keep track of suspicious objects



# Perfect for monitoring large spaces



Warehouses



Mall entrances



Large outdoor areas

# How does it work?

- Get the benefit of high resolution of an optical zoom PTZ camera with the intelligence of notification from a wide angle camera.

## Motion Detection



Command via network to tell PTZ to go to a specific preset

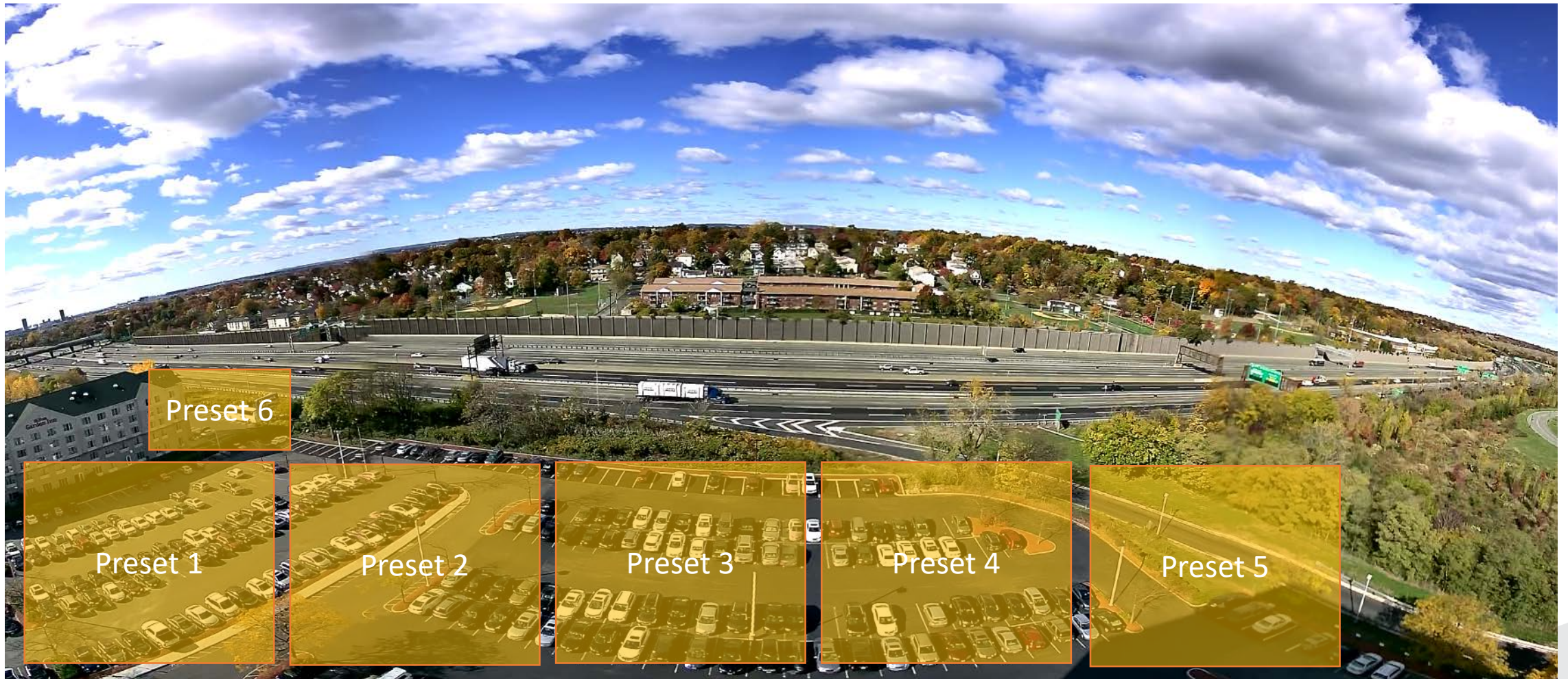
- Most cameras can have up to 8 motion detection zones. Each one can be configured and set to a unique hand over PTZ/Preset.

# FYI

---

- PTZ camera can be set to automatically tour presets, auto pan, swing, trace, etc.
- After the handover event the camera can return to its' auto mode.

# PNM-9020V example









## Demo Videos

---

- [Wisenet P Series Handover.mp4](#)
  - PNM-9020V Multisensor w/ PNP-9200RH
  - <https://www.youtube.com/watch?v=fY91RSfJJMo>
  
- [Wisenet X - PTZ Handover + Auto Tracking.mp4](#)
  - XNB-6000 w/ XNP-6370RH
  - <https://www.youtube.com/watch?v=Sjtr-XxYhaM>

## Compatible Models

---

- Spotter Camera
  - Any Wisenet X, P series camera
- PTZ Camera
  - Any Wisenet IP PTZ camera (\*Auto tracking not available on all models)

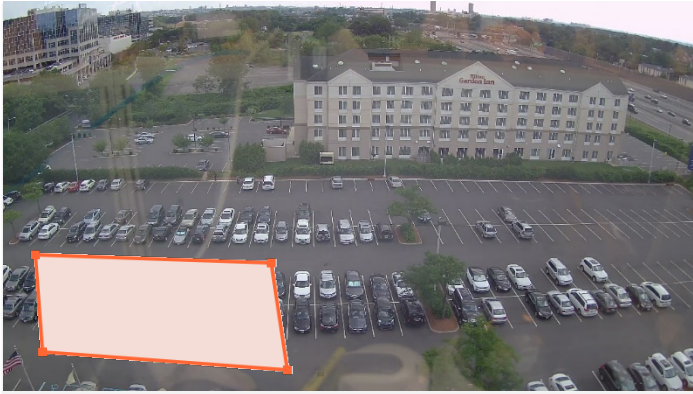
# Configuration 1

- Spotter Camera > Set Motion Zone

Motion detection

Enable Motion detection

Area      Exclude area



Area

1 2 3 4 5 6 7 8

Level of detection

100  
90  
80  
70  
60  
50  
40  
30  
20  
10  
0

+ 33 -

Sensitivity

- 80 +

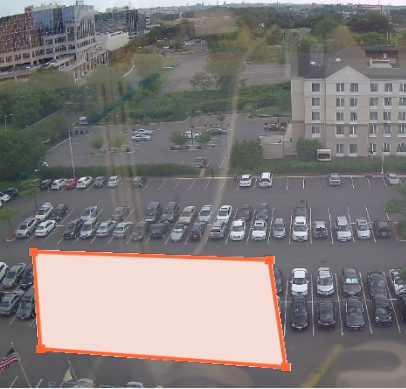
# Configuration 2

- Spotter Camera > Enable handover, add receiver (PTZ) camera information

Motion detection

Enable Motion detection

Area Exclude area



**Add Camera**

IP type: IPv4

IP address: 192.168.60.201

Port: 80

User: admin

Password: .....

Preset No.: 5 (1 ~ 300)

Apply Cancel

Hand over

Enable  Disable

Receiver camera

Add Delete

<input type="checkbox"/>	No.	IP type	IP address	Port	User	Password	Preset No.
<input type="checkbox"/>	1	IPv4					

# Configuration 3

- PTZ Receiver > Configure/verify PTZ camera preset
- Configure tracking, if desired/available

The screenshot displays the 'PTZ setup' configuration page in the Wisenet interface. A 'Preset setup' dialog box is open, allowing the user to configure a new preset. The dialog includes a 'Number' dropdown menu set to '5:Area1' and a 'Name' text input field containing 'Area1'. 'OK' and 'Cancel' buttons are located at the bottom of the dialog. In the background, a table lists existing presets with columns for 'No.', 'Name', 'Follow-up action', 'Tracking time', and 'Go to menu'. The table contains five rows, with the fifth row showing a preset named 'Area1'.

No.	Name	Follow-up action	Tracking time	Go to menu
1		Auto	1 minutes	Camera setup
2		Auto	1 minutes	Camera setup
3		Auto	1 minutes	Camera setup
5	Area1	Auto	1 minutes	Camera setup


# Auto Run Configuration

WISENET

Basic < PTZ > PTZ setup < PT limit RS-485 < Video & Audio < Network < Event < Analytics < System < Open Platform <

### PTZ setup

Preset	Swing	Group
Tour	Trace	Auto run



Mode: Off, Home, Preset, Swing, Group, Tour, Trace, Schedule, Auto pan

Time: 5 seconds, 10 seconds, 20 seconds, 30 seconds, 1 minutes, 2 minutes, 3 minutes, 4 minutes, 5 minutes

Apply Cancel



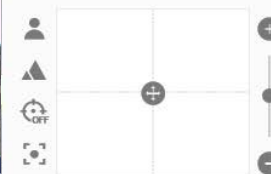
# Reference - Auto Tracking Configuration

WISeNET



- Basic <
- PTZ <
- Video & Audio <
- Network <
- Event <
- Analytics** >
- Motion detection
- Tampering detection
- Fog detection
- Face detection
- IVA
- Auto tracking**
- Audio detection
- Sound classification
- System <
- Open Platform <

## Auto tracking



### Exclude area

Delete

	No.	Name
<input type="radio"/>	1	Area1
<input checked="" type="radio"/>	2	Area2

## Configuration

- Camera height  m
- Zoom  Enable
- Maintain object size
- Display indicator  Enable
- Exclude area  Enable
- Auto release  Enable

# Live Demo

---

- Spotter Camera - PNF-9010R
- PTZ Camera - SNP-L6233



Thank You!

Questions?