

# Focus on Maintenance

Webinar

[hanwhasecurity.com](http://hanwhasecurity.com)

Greg Hadley  
Training Manager

# Agenda


- Introduction
- Feature 1
- Feature 2
- Live Demo
- Q&A



## Notes:


- This webinar is being recorded and will be available for replaying. The presentation materials will also be available in PDF format.
- Please visit <https://www.hanwhasecurity.com/trainings/webinars/> to view webinars & sign up for future webinars.
- We will take Q&A time permitting. In case there is not time to get to all of the questions, we will reply to you individually afterwards. Please use the Chat or Q&A section.
- All participants have been put in to listen only mode.

Secure | https://www.hanwhasecurity.com

PRODUCTS ▼CYBERSECURITYTRAINING ▲SUPPORT ▼SALESSTEPRESOURCESENGLISH ▼Q


CERTIFICATION

WEBINARS

PRODUCTS ▼CYBERSECURITYTRAINING ▼SUPPORT ▼SALESSTEPRESOURCESENGLISH ▼Q

HOME - WEBINARS

WEBINARS



PREVIOUS WEBINARS

Date	Title		
November 20, 2017	Edge Recording Solutions	DOWNLOAD PDF	WATCH VIDEO
October 16, 2017	PTZ Handover	DOWNLOAD PDF	WATCH VIDEO
September 18, 2017	Hanwha Techwin Multi-sensor/Multi-directional Cameras	DOWNLOAD PDF	WATCH VIDEO

WEBINAR



# Maintenance

---

- This webinar will discuss ways that Hanwha Techwin can make your maintenance and installation tasks easier, quicker, and less frequent.
- We will discuss unique features found in our products specifically to make a service tech's job easier.



# Convenient USB Port

Use a USB Wi-Fi dongle for easy camera adjustment:  
The Wisenet Installation app, for Android and iPhone will provide quick 720P video on your mobile device without the need to connect to the network infrastructure.

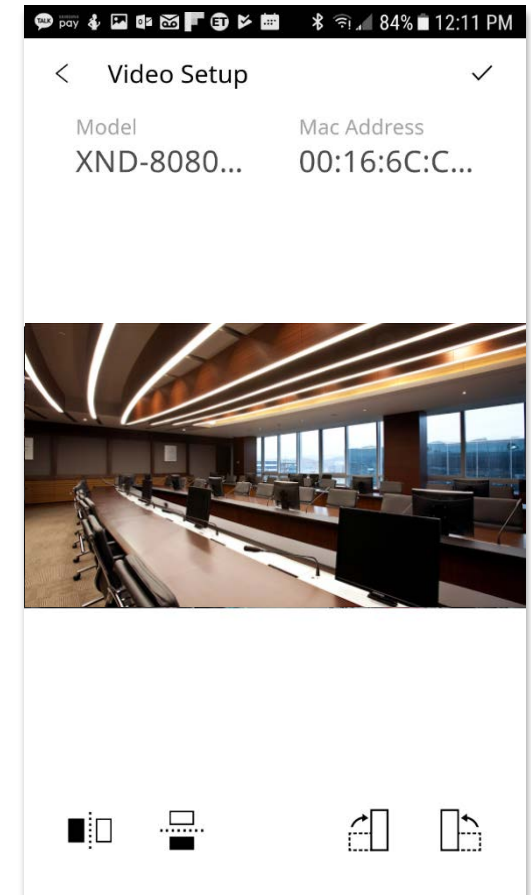
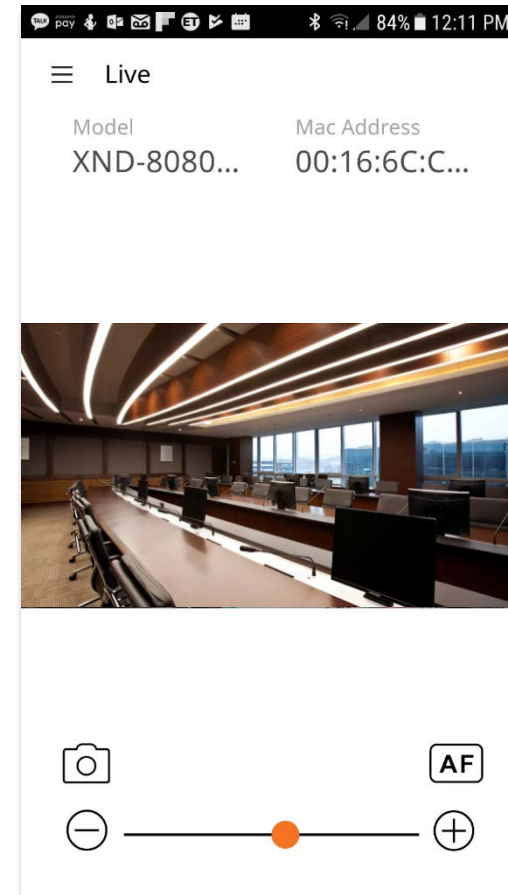
The app allows for password entry, live image viewing, & image snapshot.





## Features include:

- View Live Video
- Image Snapshot
- Simple Focus
- Zoom Control
- Flip/Mirror/Hallway
- PTRZ Control



# Ultra-Fast Simple Focus

- Not only does Simple Focus make it easy to focus a camera during installation, it can be used during maintenance to quickly ensure the focus is accurate.
- Wisenet X Series cameras focus much quicker than previous models. 48 Seconds > 8 Seconds.
- This is achieved by the camera keeping track of the lens zoom position so the entire range does not need to be scanned. For more info, check out our **Defocus Detection and AF Technologies** Whitepaper.


Wisenet III

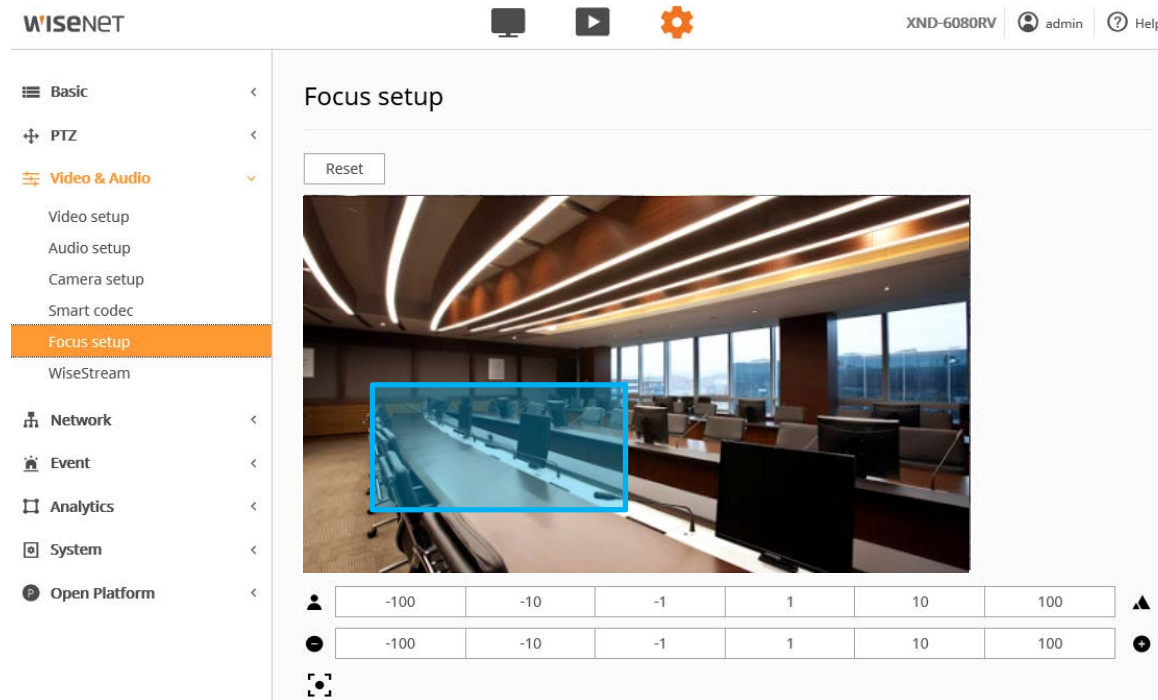


Wisenet 5



# Manually specifying a focal point

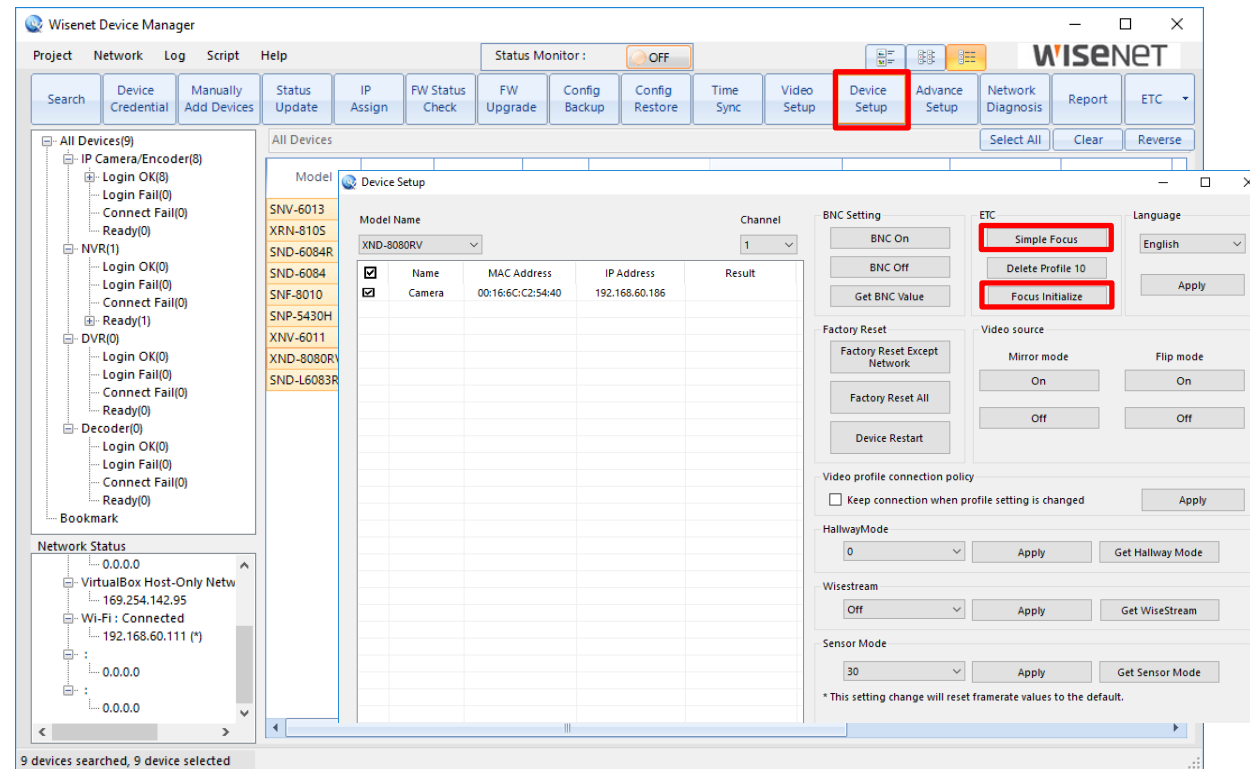
- A specific focal point for simple focus can be specified by drawing a box on the image, then pressing the  simple focus button.
- This is useful if the scene has a varying depth of field making it difficult to perform a Simple Focus.





# Batch Simple Focus

- If you have many cameras to focus, such as routine maintenance on a system, you can use the Wisenet Device Manager software to quickly send a Simple Focus command.



# Motorized Zoom Lenses

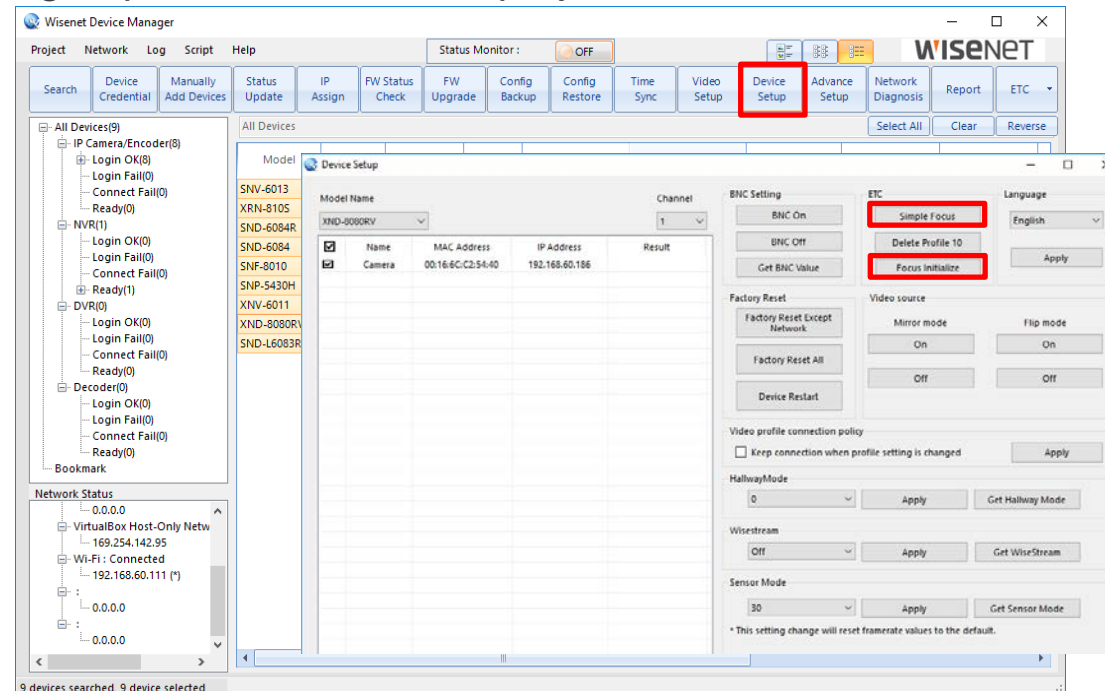
---

- Motorized zoom lenses allow a technician to make changes to the Field of View without needing to return to the camera, open the dome cover, etc.
- Very convenient during an installation to fine tune setup.



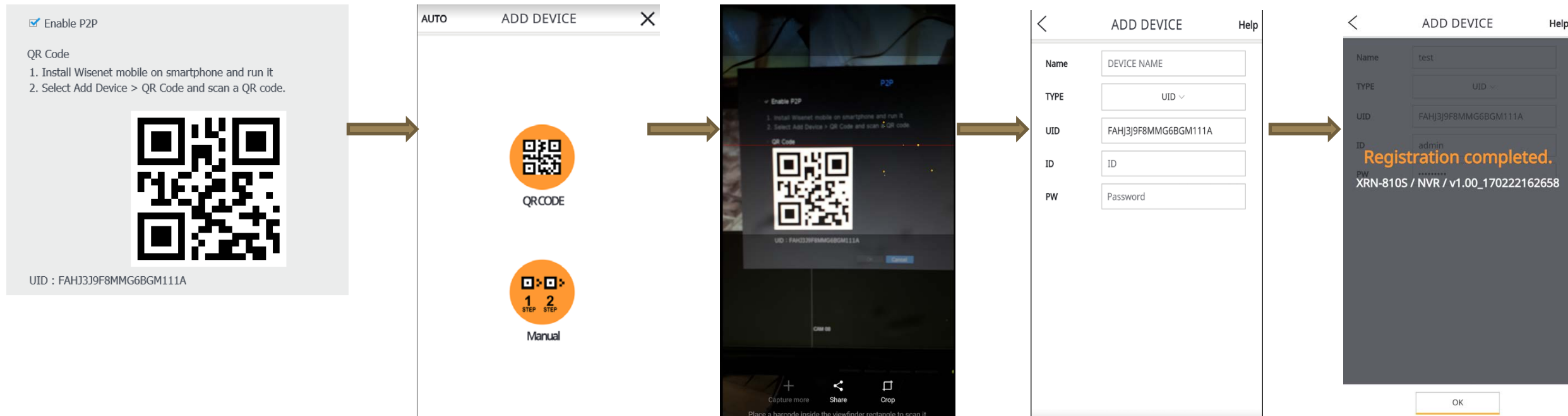
# Bulk Configuration Changes

- Wisenet Device Manager is a free software tool designed to let you quickly configure settings on multiple cameras at once. *(Check out our recorded webinar for more information)*
- Key settings include: Password change, IP assign, firmware upgrade, video profiles, image adjustment, mirror/flip/hallway, reboot, factory default, time sync, focus, WiseStream, config backup/restore, motion detection, HTTPS, SNMP, 802.1x, Open Platform, audio, multicast, & report.
- Key information can be grouped and saved to a project file for offline review & documentation.



# P2P / QR Code

- P2P is a method of providing remote access to network devices easily without having to configure port forwarding rules on a router.
- No need to keep making changes to mobile app if network settings change.



# P2P / QR Code - Demonstration





# Defocus & Tamper Detection Analytics

- Automatic detection & notification of loss of camera focus or change in scene.
- Defocus detection can refocus the camera, eliminating the need for a service call!!



# Defocus Detection

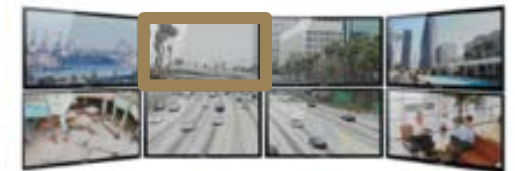
- Detect the focus of the camera become unfocused
  - When the image is blurred due to the focus being turned off, it can be corrected automatically
  - ***Can automatically perform Simple Focus on cameras with a motorized lens/back focus.***
  - Interaction with event action : Simple Focus, Event, SD Recording, Alarm out



- Automatic Simple focus

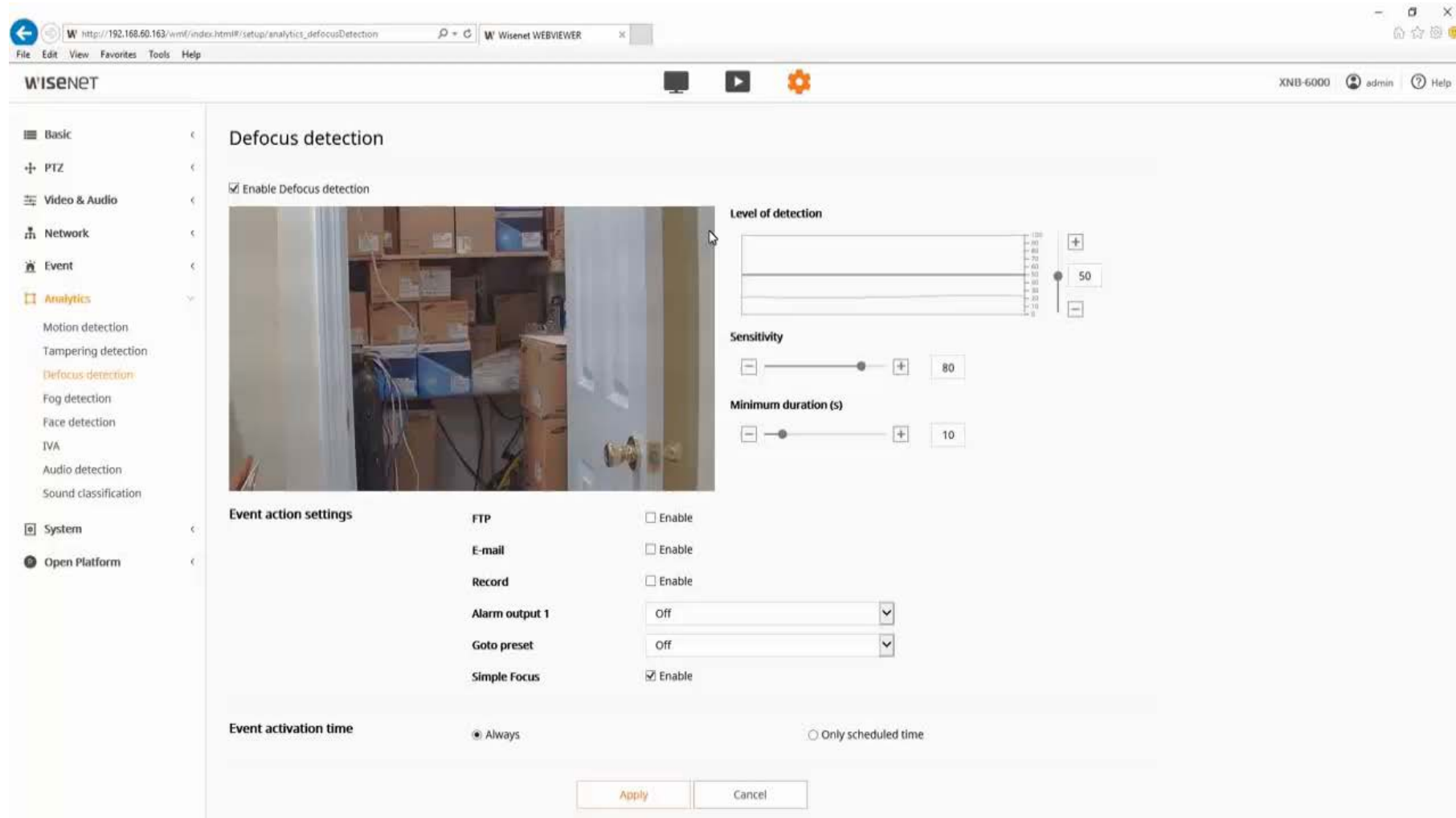


- Event Notification



- Alarm out

# Defocus Detection - Demo



The screenshot displays the Wisenet WEBVIEWER interface for configuring Defocus detection. The browser address bar shows the URL `http://192.168.60.163/wmf/index.html#/setup/analytics_defocusDetection`. The interface includes a sidebar with navigation options: Basic, PTZ, Video & Audio, Network, Event, Analytics (selected), System, and Open Platform. The main content area is titled "Defocus detection" and features a video preview of a warehouse scene. The configuration settings are as follows:

- Enable Defocus detection:** ☒
- Level of detection:** A slider set to 50, with a range from 0 to 100.
- Sensitivity:** A slider set to 80, with a range from 0 to 100.
- Minimum duration (s):** A slider set to 10, with a range from 0 to 100.
- Event action settings:**
  - FTP: ☐ Enable
  - E-mail: ☐ Enable
  - Record: ☐ Enable
  - Alarm output 1: Off (dropdown menu)
  - Goto preset: Off (dropdown menu)
  - Simple Focus: ☒ Enable
- Event activation time:** ☒ Always, ☐ Only scheduled time

At the bottom of the configuration area are "Apply" and "Cancel" buttons.

# Fog Detection

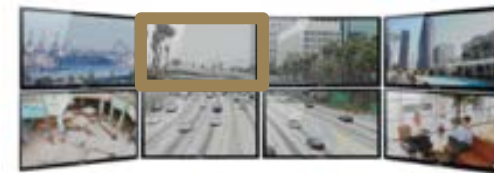
- Detects foggy environment, such as fog, sand, dust, snow, haze.
  - Interaction with event action : Defog, Event, SD Recording, Alarm out, Email/FTP
  - Can automatically enable defog adjustment.



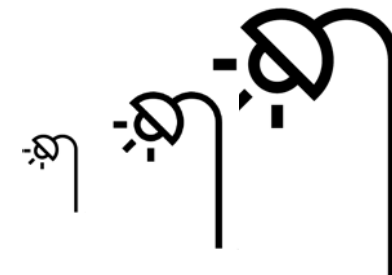
- Defog ON



- Event

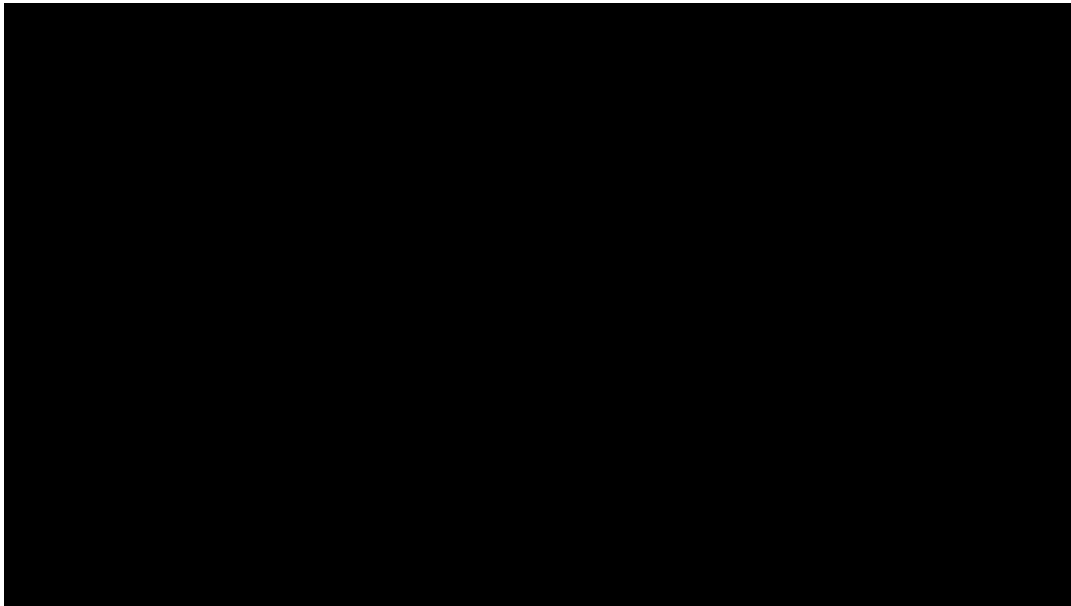


- Alarm out



# Tamper Detection

- Detect sudden changes to the camera image, from the camera being covered with a bag, spray paint, lens tampering, or change in camera positioning.





# Smart WDR

- Use WDR during bright times, and automatically turn it off to optimize the image when not needed, such as night time & low light times.

Sensor	SSDR	White balance	Backlight	Exposure
Day/Night	Special	OSD	IR	

Mode	WDR	▼
WDR level	Middle	▼
Auto	<input checked="" type="checkbox"/> Enable	
Turn off in low light	<input type="checkbox"/> Enable	
Turn off in B/W	<input type="checkbox"/> Enable	

# WAVE



- WAVE allows easy management of all servers in the Hive. Cameras can be configured by selecting multiple devices, or selecting them one after another, without needing to close each window.
- Easy 5 minute setup – install server, add cameras, setup recording
- WAVE Sync allows easy remote access without port forwarding. No need to keep making changes to firewall when you make changes to server settings.

**WISeNET WAVE**

- Q&A
- Thank You!



# WISENET



500 Frank W Burr Blvd. #43

Teaneck, NJ 07666

[Hanwhasecurity.com](http://Hanwhasecurity.com)

Copyright © 2016 Hanwha Techwin. All rights reserved