

WISENET

Wisenet Device Manager

Hanwha Techwin America

Aaron Saks

hanwhasecurity.com

Agenda

- Introduction
- Wisenet Device Manager Key Features
- Live Demo
- Q&A

Notes:

- This webinar is being recorded and will be available for replaying. The presentation materials will also be available in PDF format.
- Please visit <https://www.hanwhasecurity.com/trainings/webinars/> to view webinars & sign up for future webinars.
- We will take Q&A time permitting. In case there is not time to get to all of the questions, we will reply to you individually afterwards. Please use the Chat or Q&A section.
- All participants have been put in to listen only mode.

CERTIFICATION

WEBINARS

HOME - WEBINARS

WEBINARS



PREVIOUS WEBINARS

Date	Title		
November 20, 2017	Edge Recording Solutions	DOWNLOAD PDF	WATCH VIDEO
October 16, 2017	PTZ Handover	DOWNLOAD PDF	WATCH VIDEO
September 18, 2017	Hanwha Techwin Multi-sensor/Multi-directional Cameras	DOWNLOAD PDF	WATCH VIDEO

User Guide

Wisenet Device Manager

Explains how to operate and manage Hanwha Technwin's network devices.



PART 2 PRODUCTS

2.01 EQUIPMENT

- A. Manufacturer: Hanwha Technwin
<http://www.hanwha-security.com/>
- B. Model: Device Manager
- C. Alternates: None

2.02 GENERAL DESCRIPTION

- A. The software shall provide an efficient way to manage Hanwha Technwin video surveillance devices in network including IP cameras, encoders, decoders, NVRs and DVRs by enabling users to remotely configure multiple devices simultaneously.
- B. The software shall search for Hanwha Technwin network devices in the same network, with a selectable search duration ranging from 5 – 60 seconds. The search results are available in the following modes
 1. Icons view with live image, model name, device status, device name, MAC address, IP address
 2. List view with live image, model name, device status, device name, IP mode, IP address, MAC address, firmware version, firmware status, ISP version
 3. Detail view with model name, device status, device name, IP mode, IP address, MAC address, firmware version, firmware status, ISP version, motion board version, serial number, IP version, last refresh time
- C. The software shall provide live viewer for cameras with valid credentials. Live viewer shall include the following.
 1. Live streaming of up to four cameras or up to four profiles from one camera.
 2. Device information
 - a. Device name
 - b. MAC address
 - c. IP address
 - d. HTTP port
 - e. Device port
 - f. Resolution
 - g. Profile number
 - h. Display in original size
 - i. Keep aspect ratio
 - j. Snapshot to save images in JPEG format.
 3. PTZ control
 - a. Pan/Tilt/Zoom control
 - b. Sensitivity of PTZ control
 - c. Move to a position set in coordinate with zoom ratio set by user
 - d. Add and delete preset
 - e. Move to home position
 4. Focus setup

Introduction

We live in an increasingly connected world, where more and more devices and systems are networked and shared with other systems. Convenience is a main driver behind this trend, as people have come to expect the ability to connect to and control devices and systems anywhere, anytime.

However, there is a downside to the unprecedented level of convenience provided by the growing number of networked devices, namely increased security risk. Because each device is an endpoint for networks, they introduce the potential to become entry points for hackers and others with malicious intents. In fact, in many of the most high-profile data breaches that have occurred recently, hackers were able to access corporate networks through POS, HVAC and other networked systems that failed to provide an adequate level of security to prevent these types of breaches.

While IP-based video surveillance and other solutions have grown in popularity to become the accepted standard for new deployments and upgrades, security systems are no exception. A hacker does not discriminate among networked devices whether it performs a critical function like security or not. As such, video surveillance cameras and other devices are among the lengthy list of potential network entry points that are continually being probed for vulnerabilities that can be exploited. Therefore, it is essential that organizations take the necessary measures to ensure the highest level of security for their networks and IP cameras, encoders, NVRs and DVRs. There are a number of best practices that should be undertaken to strengthen device security to prevent unauthorized access and protect end users video surveillance systems and their overall network. Hanwha is not only aware of these best practices but has built a number of technologies and capabilities into its products to make it easier for organizations to take these important steps toward improving network security. These items should be reviewed by the owner of security systems, IT personnel, and Systems Integrators installing systems to determine the level of security needed while balancing the ease of use, with acceptable risks.

This guide will show snapshots from network cameras where applicable. Most settings can be configured in batch for multiple cameras using the Wisenet Device Manager Software (Figure 1).

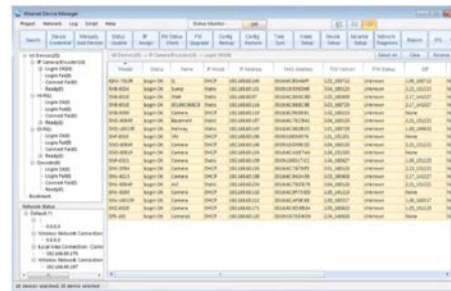


Figure 1

- Wisenet Device Manager is a software tool to use at every install.
- We have a user manual, A&E Spec Sheet, & quick start guide available.
- Our Cyber Security white paper uses Device Manager to efficiently deploy secure solutions.

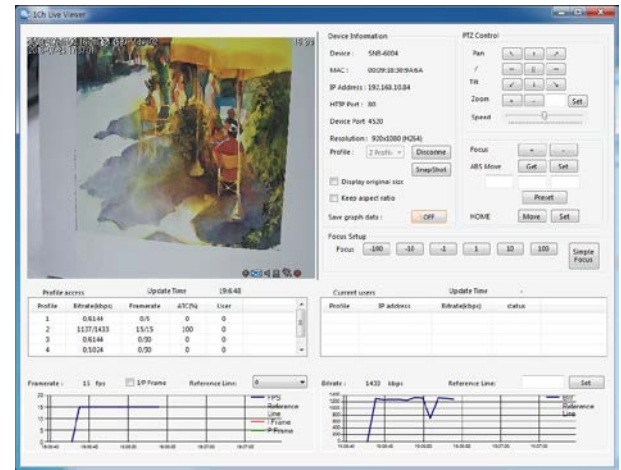
Wisenet Device Manager

- Used during the commissioning, Installation, Operations, & Maintenance of a system.
- Full Featured Enterprise Tool to configure camera settings to many cameras at once in bulk.
- Does more than just IP addressing or firmware upgrade, or video profile settings.
- Does not require back end server.
- Does not provide backdoor capabilities.
- Allows management for system solutions, including IP cameras, Encoders, NVRs, DVRs, Decoders.

- Device Manager is always being updated to support new models and new features.
- Use the Online Updater Tool to keep it up to date.

Key unique features 1/2:

- Manage cameras, encoders, NVRs, DVRs, Decoders. Not just for cameras!
- Ability to add subnets W/O search, useful for VLANs, WAN.
- Ability to perform firmware download offline from cameras, Check for latest firmware, update multiple or sequential with latest version
- Encrypted project file, bookmarks, useful as a reference when not onsite
- Image snapshot in Excel report
- Script editor for testing camera and network performance
- 1-ch live viewer - compare multiple profiles or multiple cameras, useful for WiseStream & GOV tuning, can select an NVR to view channels. View bitrate and bandwidth graphs, with ability to save graph data
- Easily set multicast



- Loading a template to many cameras keeps IP address for ease of setup
- Camera image setup with live reference display
- Easy PTZ preset config with name display from camera
- Multi-NIC aware
- Assign IP to multiple devices at once
- Status monitor for IT staff to use on a daily basis
- Easily re-focus all cameras at once
- Many cyber security related functions can be configured at once

Where to download Wisenet Device Manager?

Secure | <https://www.hanwhasecurity.com>



PRODUCTS ▾ CYBERSECURITY TRAINING ▾ SUPPORT ▾ SALES STEP RESOURCES ENGLISH ▾ 🔍

Browse Our Resources
Media Library
• READ MORE

Trade Shows & Events
Calendar
• READ MORE

Hanwha Technwin Tools
Project and Design Tools
• READ MORE

Contact Us
Do you have questions?
• READ MORE

Secure | <https://www.hanwhasecurity.com/tools>

Hanwha Technwin America

PRODUCTS ▾ CYBERSECURITY TRAINING ▾ SUPPORT ▾ SALES STEP RESOURCES ENGLISH ▾ 🔍

HOME ▾ TOOLS

PROJECT AND DESIGN TOOLS

- Wisenet Device Manager**
• READ MORE
- Wisenet ToolBox**
• READ MORE
- Wisenet Online Tool Updater**
• READ MORE
- Network & Audio Video Shape Tool**
• READ MORE



- Q&A
- Feature requests.
- Thank You!

WISENET



500 Frank W. Burr Blvd., Suite 43

Teaneck, NJ 07666

Hanwhasecurity.com